

# 100% MARYLAND

Transition to 100% wind, water, and solar (WWS) for all purposes  
(electricity, transportation, heating/cooling, industry)



Residential rooftop PV  
5.4%



Solar PV plants  
22.2%



CSP plants  
0%



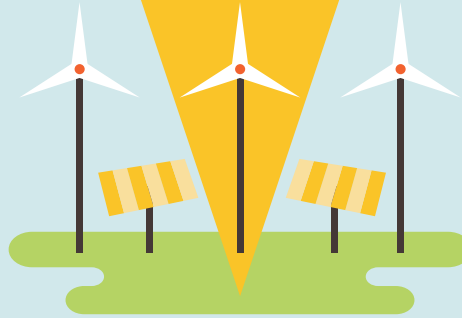
Onshore wind  
5%



Offshore wind  
60%

## 2050

PROJECTED  
ENERGY MIX



Commercial/govt  
rooftop PV  
4.8%



Wave devices  
1%



Geothermal  
0%



Hydroelectric  
1.5%



Tidal turbines  
0%



### 40-Year Jobs Created

Number of jobs where a person  
is employed for 40 consecutive years

Operation jobs:



**35,893**

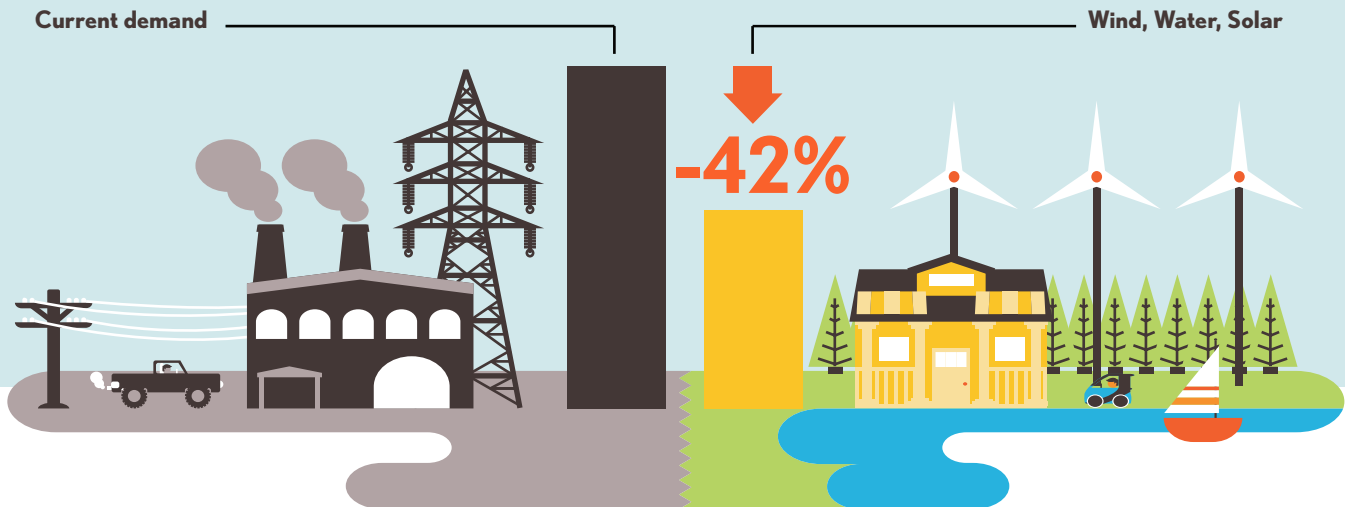
Construction jobs:



**51,557**

=10,000

Using WWS electricity for everything, instead of burning fuel, and  
improving energy efficiency means you need much less energy.



**VISIT [THESOLUTIONSPROJECT.ORG](http://thesolutionsproject.org)**

**TO LEARN MORE AND [100.ORG](http://100.org) TO JOIN THE MOVEMENT**

THE  
**SOLUTIONS**  
PROJECT

Data from Stanford University - For more information, visit  
<http://go100.me/50StateTargets>

FOLLOW US ON



100isNow

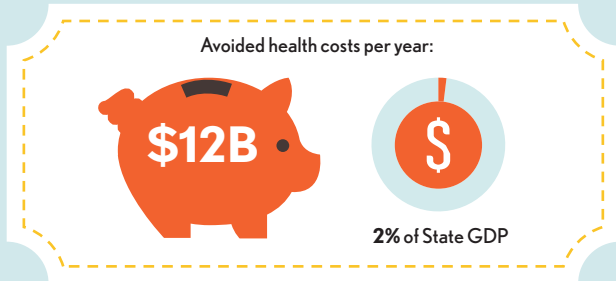


SolutionsProj

# 100% MARYLAND

Transition to 100% wind, water, and solar (WWS) for all purposes  
(electricity, transportation, heating/cooling, industry)

## Avoided Mortality and Illness Costs

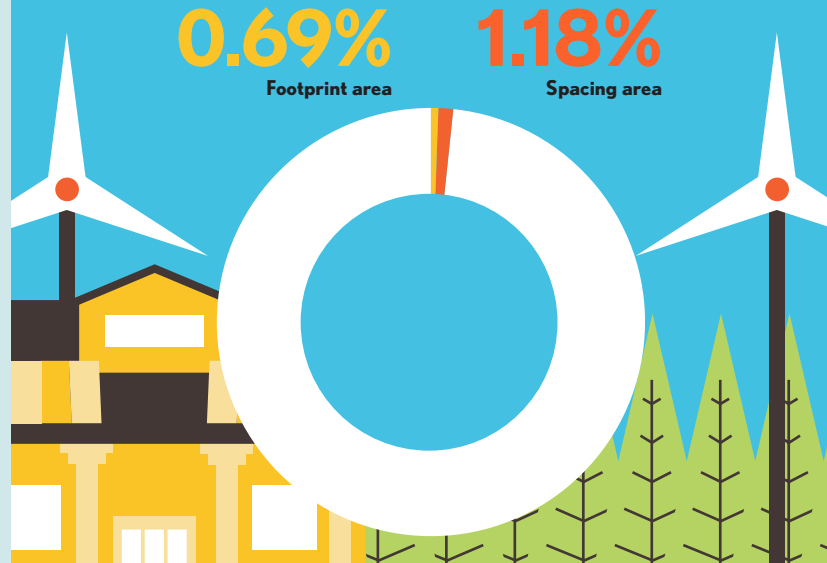


Air pollution deaths avoided every year: **1350**



Plan pays for itself in as little as **4** years from air pollution and climate cost savings alone

## Percentage of Maryland Land Needed for All New WWS Generators



## Future Energy Costs 2050

BAU (Business as usual) WWS (Wind, water, solar)

U.S. average fossil-fuel energy costs\*

**11.1 c/kWh**

\*Health and climate external costs of fossil fuels are another 5.7c/kWh

State average WWS electricity costs

**12.5 c/kWh**

## Money in Your Pocket

**[P] = \$2,000**

Annual energy, health, and climate cost savings per person in 2050: **\$7,187**



Annual energy cost savings per person in 2050: **\$72**



**VISIT [THE SOLUTIONS PROJECT.ORG](http://thesolutionsproject.org)  
TO LEARN MORE AND [100.ORG](http://100.org) TO JOIN THE MOVEMENT**

THE  
**SOLUTIONS**  
PROJECT

Data from Stanford University - For more information, visit  
<http://go100.me/50StateTargets>

FOLLOW US ON

100isNow

SolutionsProj